

Horn in F II

Georges ENESCO
Valentin Doni

Moderato malinconico $\text{♩} = 50$ 1^{Op. 25}
6 I

Moderato malinconico ♩ = 50 1 I 3

11 4 2 4 3 3

22 4 4 ♩ = 60 5

In 8 poco rit. ♩ = 55 In 4

32 5 3 6 bell up *ff* *espressivo* 6

40 2/4 4/4 6/4 4/4

44 7 ♩ = 50 2 2 pochiss. rit. 8 a tempo ♩ = 50 3

52 ♩ = 45 3 9 ♩ = 50 3 ♩ = 45 2

61 10 ♩ = 50 3 ♩ = 45 2 11 ♩ = 50 *f* 3

68 ♩ = 40 ♩ = 52 ♩ = 50 12/8 12/8

73 12 ♩ = 50 5 13 3 ♩ = ♩ 7/8 4/4

Horn in F II

82 **poco rit.** **a tempo**

3

14

88 $\text{♩} = 50$

2

93 **15** $\text{♩} = 50$

mf

rit. molto tranq. **pochiss. animato**

97 **16** $\text{♩} = 50$ $\text{♩} = 58$

p

3

101 **ca - lan - do - poco a poco - poco allarg.**

f *mf*

6

103 **17** $\text{♩} = 60$

mp *p*

3

105 **pochiss. rit. - esitando, tranq.** **a Tempo I molto tranq.**

$\text{♩} = 45$ $\text{♩} = 40$

18

2 2 3

113

2 2

II

Horn in F II

Andante sostenuto e misterioso $\text{♩} = 46$

11 19 6 3 20 4

24 21 3 3

32 22 4

39 23 24 25 ----- $\text{♩} = 40$ pesante

51 26 pochiss. piu agitato $\text{♩} = 56$ poco piu sost. $\text{♩} = 52$

56 poco allarg. ---al 27 Tempo I $\text{♩} = 46$ sost. ----

59 a tempo $\text{♩} = \text{♩}$ ben sost. strascinandosi

62 28

67 strascinandosi f ben sost. ---- a tempo strascinandosi

69 pesante largamente $\text{♩} = 40$ 29 8

Horn in F II

2

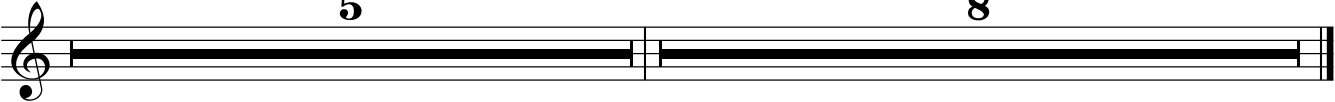
80

30

5

31

8



Allegro con brio, ma non troppo mosso ♩ = 110

13 32 17 33 15

46 34 9 2

61 35 ♩=120 6

75 36 espress. mf

84 7 6

100 2

106 38 12 39 10 f

133 poco meno 5 40 Meno mosso ♩=70 4 A tempo ♩=110 p

144 Meno mosso ♩=70 3 A tempo ♩=110

150 Meno mosso ♩=70 3

Horn in F II

155 **A tempo** ♩=110 **Meno mosso** ♩=70

160 **A tempo** ♩=110 **Meno mosso** ♩=70 **espress.**

168 **f**

176 **42** **A tempo** ♩=110 **4**

183 **3** **mf**

191

195 **43** **Meno mosso, rubato** ♩=80 **2**

202 **Tempo primo** ♩=110 **ff**

208 **Meno mosso** ♩=80 **44** **Tempo primo** ♩=110 **9**

227 **3** **mf**

Detailed description of the musical score: The score is for a Horn in F II. It begins at measure 155 with a tempo of 'A tempo' (♩=110). The first staff shows a triplet of eighth notes. The second staff starts at measure 160 with 'A tempo' (♩=110) and 'Meno mosso' (♩=70) with an 'espress.' marking. It features a forte (f) dynamic and a triplet. The third staff continues the melodic line. The fourth staff at measure 176 is marked '42' and 'A tempo' (♩=110), featuring a '4' measure rest. The fifth staff at measure 183 has a '3' measure rest and a mezzo-forte (mf) dynamic. The sixth staff at measure 191 continues the rhythmic pattern. The seventh staff at measure 195 is marked '43' and 'Meno mosso, rubato' (♩=80), featuring a '2' measure rest and a forte (f) dynamic. The eighth staff at measure 202 is marked 'Tempo primo' (♩=110) and 'ff' (fortissimo). The ninth staff at measure 208 is marked 'Meno mosso' (♩=80) and '44', followed by 'Tempo primo' (♩=110) and '9'. It includes a mezzo-piano (mp) dynamic. The final staff at measure 227 features a '3' measure rest and a mezzo-forte (mf) dynamic.

236 45

f

252

257

mp

264 46

f

275 47 **Meno mosso** ♩=85 48 **Ben moderato** ♩=70

f

esitando, poco accel. al Tempo I

e - si - tan - do 49 50 **animato** ♩=110 **poco a poco acceler.**

mp

303

2

309 51 **con fuoco** ♩=120

f *mp*

320 ♩=125

f

332 52 **Meno mosso** ♩=70 **poco acceler.** **poco allarg. a tempo** ♩=70

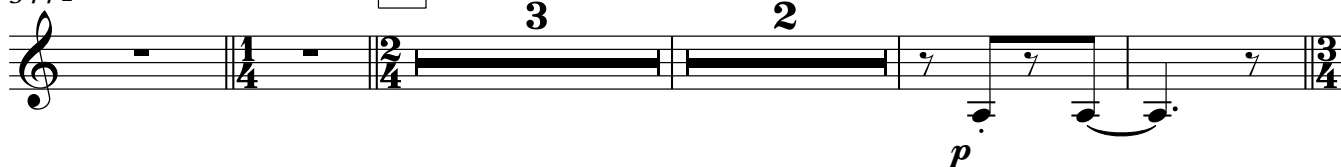
3 **2** **6**

Horn in F II

344 **piu animato** ♩=80

53 ♩=100

♩=110



353



363 54

♩=120



poco a poco allarg.

sub.meno mosso ♩=75

molto meno mosso

largamente ♩=50

In 4 ♩=45

374



381 In 2

♩=50



387 56

funnel up



395 57

In 4 ♩=40



403

molto. allarg.

